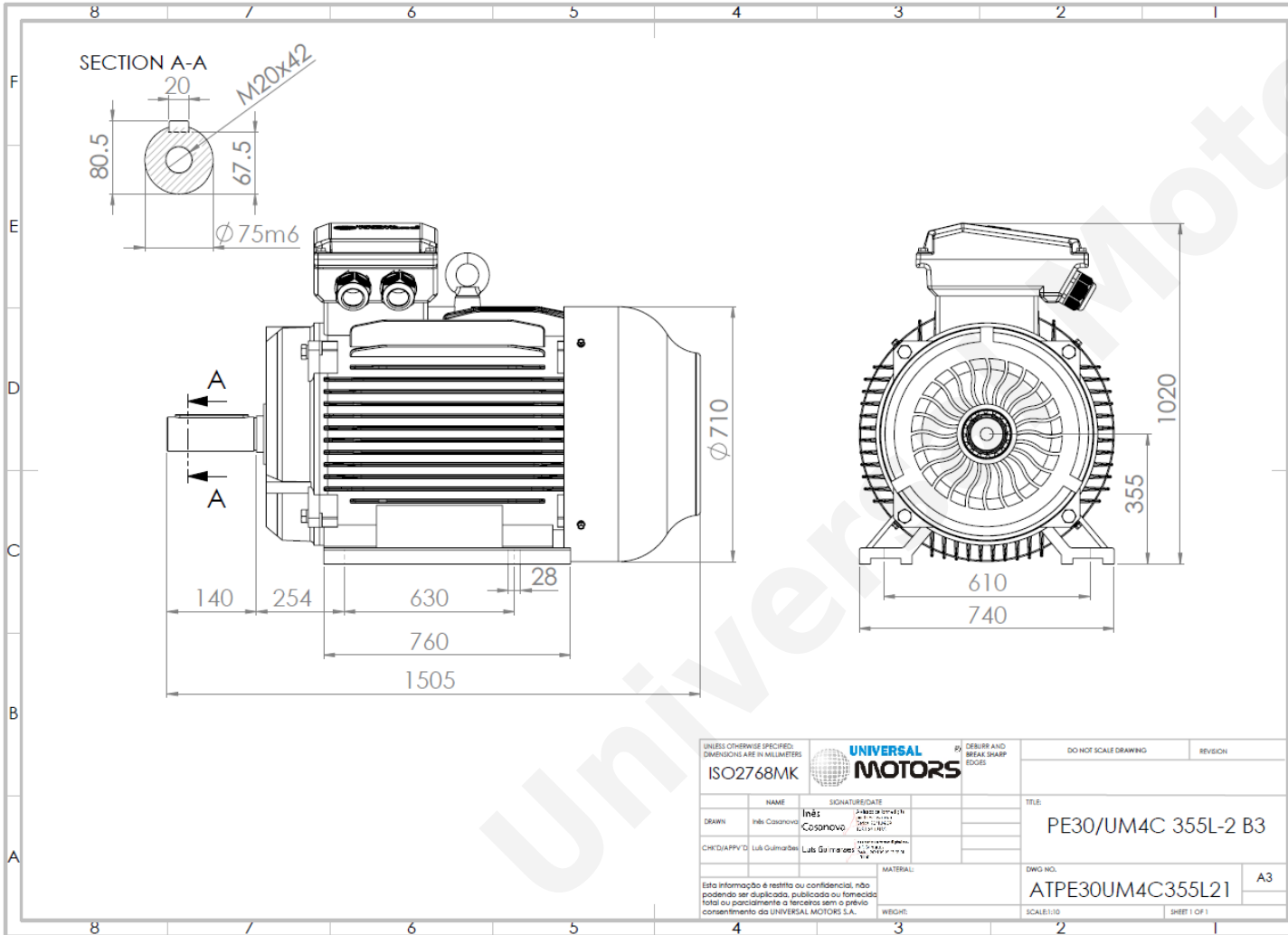




# TECHNICAL DATA

Three Phase Electric Motors - Cast Iron Frame  
 PE30 355 L 2 IE3  
 315 kW / 400 Cv  
 2980 RPM



Motor type:	PE30 355 L 2 IE3
Output:	315 kW / 400 Cv
Speed (min <sup>-1</sup> ):	2980 RPM
Frequency:	50 Hz
Voltage:	400 V
Current:	522.0 A
Power factor (Cos Ø):	0.91
Poles:	2
Insulation class:	F
Temperature rise Class:	B
Efficiency 50%:	94.9 %
Efficiency 75%:	95.8 %
Efficiency 100%:	95.9 %
Torque:	1009 N.m
Tstarting/Tnominal:	1.6
Istarting/Inominal:	7.2
Tmaximum/Tnominal:	2.2
Noise:	100 Db(A)
Weight:	2400 Kg
Bearing DE:	6319 C3
Bearing NDE:	6319 C3

Regime - S1

Altitude - 1000m

Environment Temperature - 40°C

## CONTACTS:

UNIVERSAL MOTORS      Tel: +351 252 299 080  
 Rua de São Brás,745      Fax: +351 252 299 089  
 4480-782 VILA DO CONDE      Mail: [geral@universalmotors.pt](mailto:geral@universalmotors.pt)

\* References applied only in the UK